

ShadowXafe®

Powerful Data Protection Made Simple



Arcserve ShadowXafe

Arcserve ShadowXafe is a data protection solution that brings a unified, SLA-driven management for the complete data protection lifecycle. ShadowXafe delivers dependable data recovery with an optimized, easy-to-use management workflow. Its powerful data protection is both host-based and agent-based, applicable for a wide range of workloads, physical and virtual, on premises and in the cloud. ShadowXafe ensures reliable data protection, reducing application downtime and improving productivity. In the event of system-wide failure, data corruption or natural disaster, ShadowXafe’s patented VirtualBoot technology allows organizations to perform a virtual machine recovery in milliseconds and restore their entire infrastructure in minutes. ShadowXafe provides total business continuity when integrated with Arcserve Cloud Services, our disaster recovery as a service (DRaaS) as a service platform.

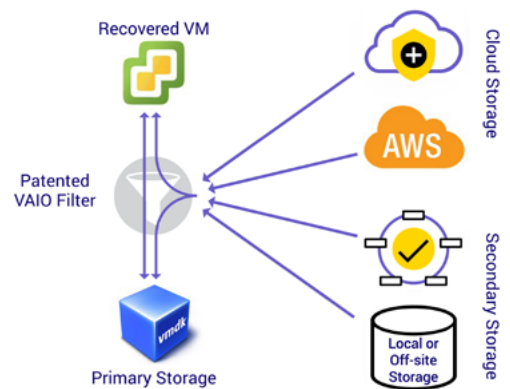
ShadowXafe’s Architecture

Designed for scalability, ShadowXafe’s microservices-based architecture can rapidly deploy service nodes for an unlimited number of sites. It includes a collection of interconnected, scalable, and easily manageable microservices that deliver robust data protection and storage access. There are three main components: **Data Protection Services**, **Agents**, and **OneSystem®**. The Data Protection Services deliver storage access and data protection procedures including backup, restore, replication, and storage. **Agents** are adapters for protecting physical servers and virtual machines (VMs) to deliver higher SLAs. **OneSystem** is the cloud-based management service (which can also be on-premises) that orchestrates and manages the activities within Data Protection Services. It provides real-time monitoring, reporting, and visibility from any location.

Instant Restore with VirtualBoot

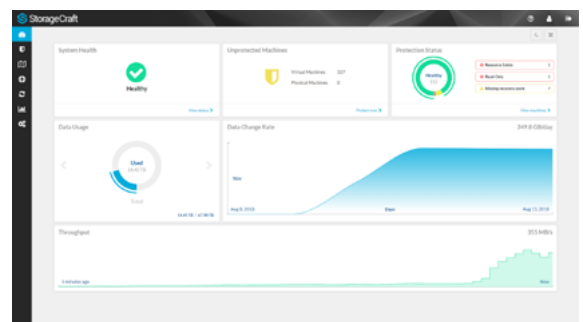
The patented Arcserve VirtualBoot technology instantly restores data, directly from the backup images, and gives full access to system resources and applications in seconds. There is no need for VMware Storage vMotion as data can be accessed directly on the primary storage. VirtualBoot is built on VAIO filter and performs advanced intelligent I/O read-ahead to deliver the data before it is needed. Although rapid failover in the event of a disaster is the most critical function of VirtualBoot, it provides various other valuable functions including:

- Confirm and validate backup images proactively
- Act as a temporary solution to minimize downtime during server migration
- Test software packages
- Provide application/kernel updates before production deployment
- Access applications from a specific point in time to export data from applications



Management Simplicity with OneSystem

The data protection workflow is managed through OneSystem®, a cloud-based unified management platform featuring a true SLA-based protection framework. The dashboard gives an overview of the health of the system. Policy creation is intuitive with all the ingredients that make up the SLA—backup frequency, retention policy, target location, replication for offsite disaster recovery—in a single location. Once created, the SLA protection policy can be applied to any combination of virtual and physical machines.



Features and Benefits

Features	Benefits
Management Simplicity	<ul style="list-style-type: none"> Single pane of glass for ease of management • Intuitive SLA-based data protection workflow • Supports both cloud-based and on-premises deployments • Highly scalable architecture – fast and simple to deploy <ul style="list-style-type: none"> • Optimized for ease of use • Simple backup scheduler – daily, weekly, monthly • Drives both ShadowXafe & OneXafe Solo • Status notification emails
Flexible Recovery	<ul style="list-style-type: none"> Recover to dissimilar HW or virtual environments • Ensures that recovery is fast and quick (v2v, p2p, v2p & p2v) • Utilize resources on hand. No waiting for any specific resources
Instant Recovery	<ul style="list-style-type: none"> Quickly recover files/folders and entire system in seconds • Recovery using VirtualBoot IO read-ahead technology, irrespective of the VM size • Direct recovery to primary store means no Virtual Storage Motion and no performance impact during recovery • Compression optimized for backup and restore speed
Reliable Recovery & Data Integrity	<ul style="list-style-type: none"> Dependable recovery • Supports Hyper-V, vSphere, and ESXi (agent and agentless) • VMware Certified VAIO filter driver for VirtualBoot restores • Automated, advanced reverification of backup images along with inflight verification ensures dependable backup images • Integration with 3rd party clouds (AWS, Azure, Wasabi) for off-site copies and cloud object lock for data immutability • Smart retries, and self-healing repairs ensures service reliability • Retained metadata for improved recovery experience • Cold file access technology for file folder recovery • AES 256-bit encryption for data security (in-flight and at rest) • Best-in-class certified VSS integration for app-consistent data protection • Two-factor authentication
Integrated DRaaS	<ul style="list-style-type: none"> Total business continuity • Orchestrated, one-click virtual failover • Back up directly to the cloud • Efficient WAN optimized replication to another site or StorageCraft Cloud services • Replication to another site or Arcserve Cloud Services • Seed/BMR drives and web download

Take the Next Step

Find out more at arcserve.com
 or contact us at info@arcserve.com
 or call +1 844 639-6792



Microsoft Partner
 Gold Application Development

About Arcserve

Arcserve, a global top 5 data protection vendor, provides the broadest set of best-in-class solutions to manage, protect and recover all data workloads, from SMB to enterprise and regardless of location or complexity. Arcserve solutions eliminate complexity while bringing best-in-class, cost-effective, agile, and massively scalable data protection and certainty across all data environments. This includes on-premises, cloud (including DRaaS, BaaS, and Cloud-to-Cloud), hyperconverged, and edge infrastructures. The company's nearly three decades of award-winning IP, plus a continuous focus on innovation, means that partners and customers, including MSPs, VARs, LARs, and end-users are assured of the fastest route to next-generation data workloads and infrastructures. A 100% channel-centric organization, Arcserve has a presence in over 150 countries, with 19,000 channel partners helping to protect 235,000 customers' critical data assets. Explore more at arcserve.com and follow [@Arcserve](https://twitter.com/Arcserve) on Twitter.

